



# L|E|C|O|M HEALTH

## Behavioral Health Services



# LECOM HEALTH

## TABLE OF CONTENTS

### INTRODUCTION

Introduction to LECOM Health.....	3
Achievement Center of LECOM Health.....	4
Corry Counseling of LECOM Health.....	5
LECOM Institute for Behavioral Health.....	6
Millcreek Community Hospital.....	7

### MAPS, LECOM SERVICE INFORMATION, AND STATISTICS

Services by Location.....	8
Location of BH Services & Services Map.....	9
LECOM Behavioral Health Statistics.....	10
The LECOM Continuum of Care.....	11
Services by Intensity.....	12

### TREATMENTS

Blended Case Management.....	13
Early Intervention.....	14
Electroconvulsive Therapy (ECT).....	15
Extended Acute Care.....	16
Family Based Mental Health.....	17
Family Preservation Services.....	18
Intensive Behavioral Health Services.....	19
Medication Management.....	20
Outpatient Therapy.....	21
Adult Psychiatric Partial Hospitalization.....	22
Short-Term Psychiatric Residential Treatment Facility (pRTF).....	23
Psychological Services.....	24
Residential Community Homes.....	25
School-Based Services.....	26
Sub-Acute Care.....	27
Transcranial Magnetic Stimulation (TMS).....	28

# LECOM HEALTH

## Care. Compassion. Community.



---

**When you're concerned about your family's health, you need a health system concerned about you. That's LECOM Health. We're an academic health system focused on one goal: bringing better health to everyone you care for, at every stage of their lives. Whatever your need, whether it's the expert care of our community hospital, the specialized knowledge of our clinical practices, or attentive and compassionate caregiving, you can depend on all the resources of LECOM Health to help bring a lifetime of wellness to you and those who matter most to you.**

---

*Admissions, the provision of services and referrals of clients shall be made without regard to race, color, religious creed, disability, ancestry, national origin (including limited English proficiency), age, gender, sexual orientation, culture, personal values, or belief systems.*



Any child,  
through any challenge,  
can **achieve.**

Serving more than 3,100 children each year, the Achievement Center of LECOM Health helps children and young adults to maximize their potential.

With a variety of therapeutic services for children, from birth to age 21, the Achievement Center of LECOM Health has expanded and grown to help children and families in Erie, Crawford, Forest, and Warren counties.

Achievement Center of LECOM Health believes that every child, through every challenge can achieve. We provide trauma-informed and strengths-based services to support children, youth and families through a host of difficulties. Concerns related to disruptive behavior, thinking and learning, managing emotions, social interactions, family dynamics and the experience of trauma may impact how the child or youth functions across settings. We partner with individuals and families to address:



• **Behavioral challenges** involving a pattern of arguing, defiance, verbal or physical aggression, property destruction, lying, stealing, truancy, serious rule breaking, and more.



• **Situational or long-term difficulty managing emotions** such as anger, prolonged sadness, fear, worry, irritability or moodiness, etc. that can result in a variety of outcomes, up to and including suicidal ideation, suicide attempts, and self-injurious behavior.



• **Physical challenges** for infants and toddlers age birth to three related to motor skills, speech problems, deafness/hard of hearing, feeding, or other difficulties.



• **Social difficulties**, such as struggling to build or maintain reasonable relationships with others; conflict with friends, peers, family members and/or adults; trouble adjusting to changes in the family; issues related to the rules, routines, and structure of the family, and more.



• **Developmental challenges** in the form of intellectual and learning problems, inattention, hyperactivity, impulsivity, disorganization, repetitive or stereotyped movements, unusual sensory experiences,





## Examples of Services Offered

**Family Based Mental Health (FBMH)** has been an offered service since 2008. FBMH treats children with serious emotional illness using an intensive in-home family treatment model.

**Family Preservation Services** has been an agency service since 2011. Initially called the Family Focus Program, it is funded by the Erie County Office of Children and Youth, it provides counseling and case management to families referred by that agency.

**Blended Case Management** was added to our array of services in 2013. Case managers assist clients in a variety of ways, helping them to navigate both the medical and behavioral health care systems and linking them to needed community resources.

**The Medication Support Program** is the agency's newest program. Initiating services in January 2016, MSP offers support with medication adherence, as well as education about medication and emotional illness.

**Corry Counseling of LECOM Health is a private, non-profit community agency that has served children and adults with mental and developmental disabilities in Corry for over 40 years.**

**The Mission of Corry Counseling is to offer hope, stability and choice by providing professional, caring and confidential mental health and intellectual disability provision in Corry and the surrounding area.**



# LECOM

INSTITUTE FOR  
BEHAVIORAL HEALTH



LECOM Institute for Behavioral Health (LIBH) provides compassionate outpatient psychiatric assessment, consultation, and medication management services to individuals across the lifespan. LIBH offers extensive expertise and services for children, adults and older adults designed to meet and exceed expectations in addressing behavioral health challenges.

The Institute maintains a robust team of advanced behavioral health providers. As an affiliate of the Lake Erie College of Osteopathic Medicine (LECOM), the Institute is also engaged in the education of students, residents and fellow doctors in training. For patients, our large team of experienced providers and doctors in training means better access to needed care.

The LIBH practice delivers high-quality treatment and facilitates positive patient experiences. Knowledgeable social services and support staff are available to assist with questions regarding scheduling, medication refills, referrals to supplemental services, and to liaison with the providers.

## Locations:

4740 Peach Street • Erie, PA 16506 • PH: (814) 454-3174



## LECOM HEALTH

MILLCREEK COMMUNITY HOSPITAL

Millcreek Community Hospital prides itself in its commitment to provide the best personal care possible for patients. The hospital is a leader in health care and medical education and is the founding hospital of the Lake Erie College of Osteopathic Medicine.

Millcreek Community Hospital offers a wide range of inpatient and outpatient services to meet your family's health care needs. Our specialists diagnose and treat patients in many areas of medical care.

### Services provided include:

- Adult Inpatient Behavioral Health
- Adult Psychiatric Partial Hospitalization Program
- Children's Inpatient Behavioral Health
- Electroconvulsive Therapy (ECT)
- Extended Acute Care
- Short-term Psychiatric Residential Treatment Facility (pRTF)
- Sub-Acute Care
- Transcranial Magnetic Stimulation (TMS)

# Services by Location



## ERIE COUNTY

Blended Case Management

Early Intervention

Electroconvulsive Therapy

Extended Acute Care

Family Based Mental Health

Family Preservation Services

Intensive Behavioral Health Services

Inpatient Mental Health

Medication Management

Older Adult Behavioral Health

Outpatient Therapy

Psychiatric Residential Treatment Facility (pRTF)

Partial Hospitalization Program

Residential Community Homes

School-Based Services

Sub-Acute Extended Care

Transcranial Magnetic Stimulation

## CRAWFORD COUNTY

Family Based Mental Health

Intensive Behavioral Health Services

## FOREST COUNTY

Intensive Behavioral Health Services

## WARREN COUNTY

Family Based Mental Health

Intensive Behavioral Health Services



# Locations of BH Services



Erie: 4950 W. 23rd Street  
Erie, PA 16506

Corry: 29 W. South Street  
Corry, PA 16407

Crawford: 18257 Industrial Drive  
Meadville, PA 16335

Warren: 305 N. State Street  
Warren, PA 16365



45 E. Washington Street  
Corry, PA 16407



5515 Peach Street  
Erie, PA 16509

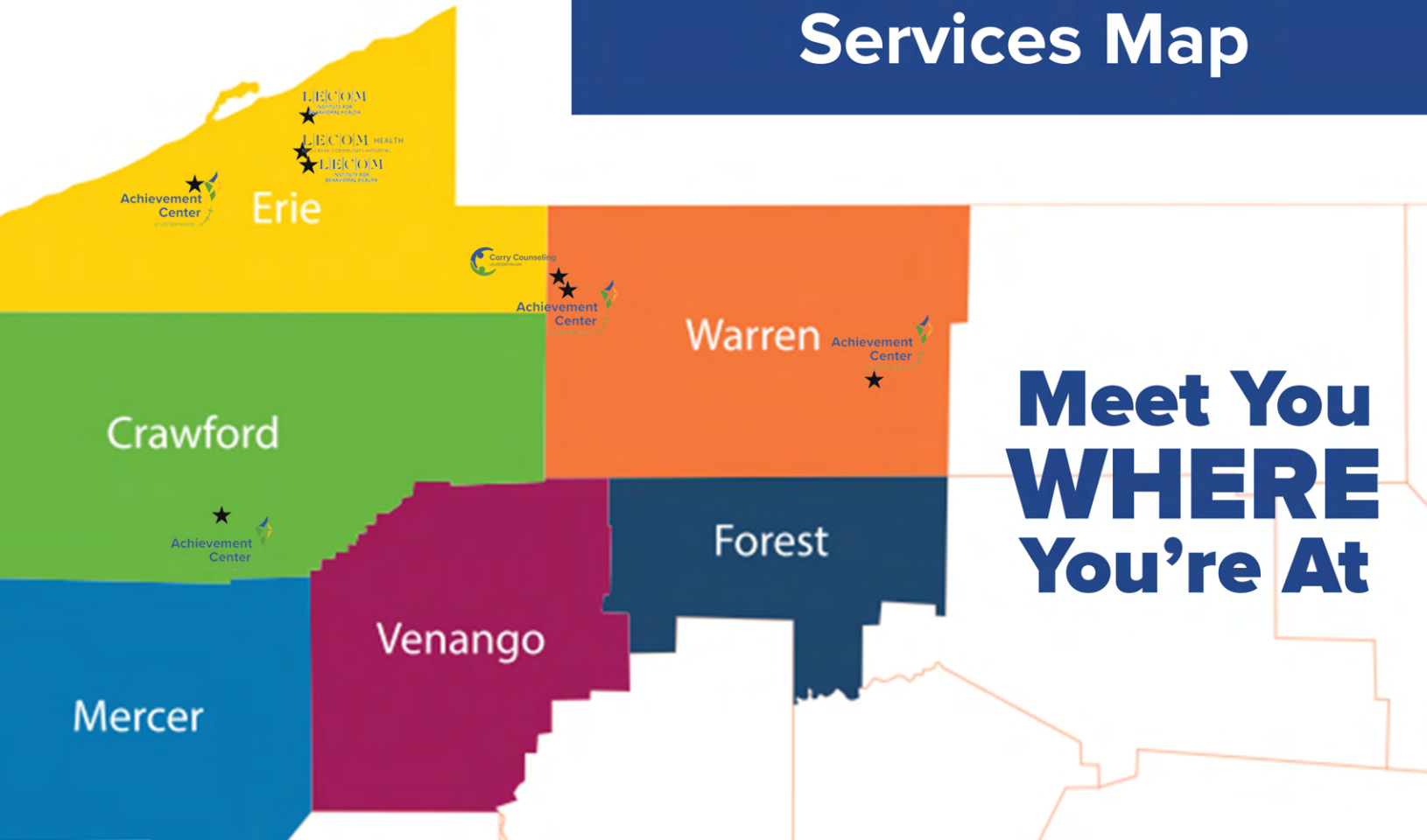


4740 Peach Street  
Erie, PA 16509

5515 Peach Street  
Erie, PA 16509

537 W. 18th Street  
Erie, PA 16502

## Services Map



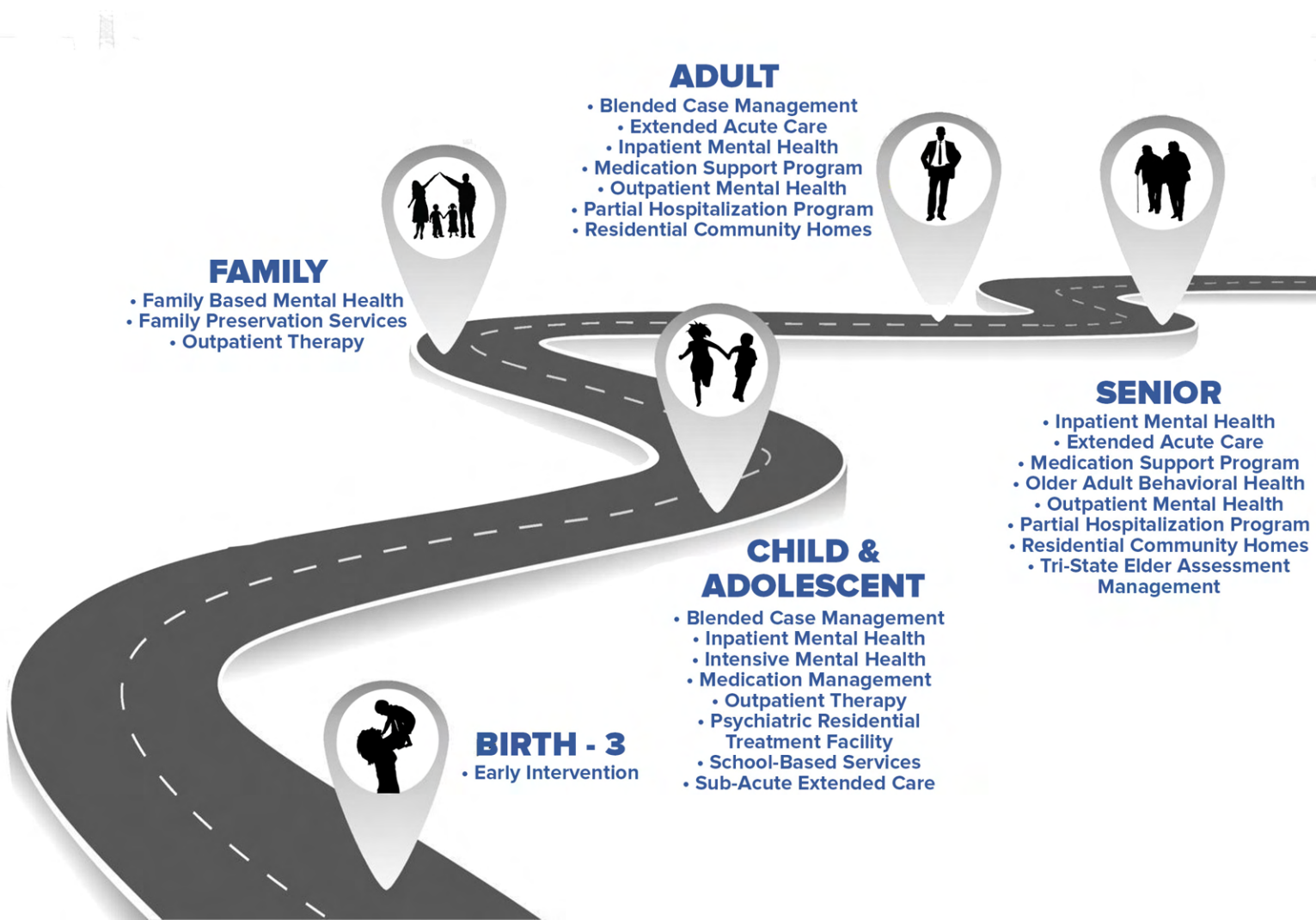
**Meet You  
WHERE  
You're At**

# Continuum of Care

## With You **ALL** The Way

LECOM HEALTH

With LECOM Health Behavioral Services, there are options for all ages, lifestyles, and needs. Through our services at the Achievement Center of LECOM Health, Corry Counseling Services of LECOM Health, LECOM Institute of Behavioral Health, and Millcreek Community Hospital, we're with you all the way.



# Services by Intensity



The behavioral health services offered by LECOM Health vary by intensity. The right service for each individual will depend on the severity of presented symptoms and what has previously been tried in that person's behavioral health journey. The services listed below are grouped into intensity levels based on their frequency, amount of authorization needed, and overall commitment.

## Higher Intensity Programs

Inpatient Mental Health  
Electroconvulsive Therapy  
Emergency Department Evaluation  
Extended Acute Care  
Sub-Acute Care

Psychiatric Residential Treatment Facility (pRTF)  
Partial Hospitalization Program  
Transcranial Magnetic Stimulation

## Moderate Intensity Programs

Family Based Mental Health  
Family Preservation Services

Intensive Behavioral Health Services  
Residential Community Homes

## Lower Intensity Programs

Blended Case Management  
Early Intervention (Birth-3)  
Medication Management  
Outpatient Therapy  
Psychological Services  
Residential Community Homes  
School-Based Services



# Blended Case Management

<p><b>Program Offered for:</b></p>  <p>ACLH - Youth CCLH - Youth &amp; Adult</p>	<p><b>Program Offered at:</b></p>  	<p><b>Contact Information:</b></p> <p>ACLH: 814-616-0520 CCLH: 814-664-7761, ext. 138</p>
---	---	---

To better support the needs of children, adolescents and adults with serious mental illness or emotional disorders, Blended Case Managers help connect services that are right for them, including education about resources, making referrals, and providing 24/7 crisis support. This holistic approach addresses the following areas of service: Mental health treatment, physical health treatment, education, daily living needs, socialization, housing, and vocation.

## Referral Process:

1. Attach a psychiatric or psychological evaluation confirming the diagnosis (required) to completed referral form.
2. Fax or secure the referral form and documentation that confirms diagnosis to:

**ACLH**

Fax: (814)-456-4873  
Secure Email:  
BCM@achievementctr.org

**CCLH**

Fax: (814)-664-4020  
Secure Email: BCM@cscorry.org



# Early Intervention

## Program Offered for:



Birth - 3

## Program Offered at:



## Contact Information:

**ECCM:** [eriecare@eccaremgmt.org](mailto:eriecare@eccaremgmt.org) or call 814-528-0600.

**ACLH:**  
[EarlyIntervention@achievementctr.org](mailto:EarlyIntervention@achievementctr.org)  
or call 814-459-2755 ext. 1

**Early Intervention services provide the support young children may need to help reach important developmental milestones through their daily activities in the home, childcare, and/or community settings. Our Early Intervention services are provided by highly qualified Occupational Therapists, Physical Therapists, Speech-Language Pathologists, Audiologists, and Specialized Instructors.**

## Referral Process:

1. Physicians, families, daycare providers, etc. can refer a child to Erie County Care Management (ECCM) for an assessment to determine if the child is eligible for Early Intervention.
2. ECCM Service Coordinators will schedule an assessment.
3. If the child is deemed to have met eligibility criteria, the ECCM Service Coordinator will create an Individualized Family Service Plan (IFSP).
4. The family is then asked to choose a provider. The Achievement Center of LECOM Health is a provider.
5. ECCM will then make contact with the provider chosen by the family.



# Electroconvulsive Therapy

Program Offered for:



Adult

Program Offered at:

**LECOM** HEALTH  
MILLCREEK COMMUNITY HOSPITAL

Contact Information:

LIBH: (814) 454-3174

**Electroconvulsive therapy (ECT) is a medical treatment most commonly used in patients with severe major depression or bipolar disorder that has not responded to other treatments. ECT involves a brief electrical stimulation of the brain while the patient is under anesthesia. It is typically administered by a team of trained medical professionals that includes a psychiatrist, an anesthesiologist, and a nurse.**

## Referral Process:

Psychiatric evaluation recommending ECT must be completed and included with a completed referral packet. Completed referral packets are sent via fax to Millcreek Community Hospital at (814) 868-7659.



## Extended Acute Care

### Program Offered for:



Adult

### Program Offered at:

**LECOM** HEALTH  
MILLCREEK COMMUNITY HOSPITAL

### Contact Information:

**MCH Phone:** (814) 868-7668

**MCH Email:** [lecomeac@mch1.org](mailto:lecomeac@mch1.org)

The **Extended Acute Care (EAC)** program provides an extension of active treatment within the inpatient units. The **EAC** offers a transitional stay to promote independence and provide recovery maintenance tools and life skills education to prepare patients for success in the community. This program is for adults over 18 years of age and is housed within the inpatient behavioral health units of Millcreek Community Hospital.

This program supports patients whose mental health symptoms interfere with their ability to function and experience success in their daily life. The **EAC** provides necessary treatment in a safe environment with **24/7** care for patients that promotes wellness and symptom management while empowering patients to achieve successful community tenure. Program features include therapeutic and education groups, treatment planning, and whole person care with a network of health care professionals.

## Referral Process:

**Providers:** To refer a patient, please send completed EAC referral form, current psychiatric evaluation, and 3 days progress notes to [lecomeac@mch1.org](mailto:lecomeac@mch1.org). Patient must be inpatient to be referred. If you have any questions, please call (814) 868-7668.



# Family Based Mental Health

<p><b>Program Offered for:</b></p>  <p>Families</p>	<p><b>Program Offered at:</b></p>  	<p><b>Contact Information:</b></p> <p>Erie County: 814-616-0553  Crawford County: 814-724-1331 ext. 106  Warren County: 814-434-9057  CCLH: 814-664-7761 ext. 120</p>
--	---	---

**Family Based Mental Health provides a unique mix of therapy and practical services to families with children who are struggling with significant emotional and/or behavioral concerns. Services are often recommended to prevent hospitalization or residential placement and to reunite families with children who have already been removed from their homes. These services, delivered by a team available for crises 24/7, support the family and the function of the family to keep families together.**

## Referral Process:

1. The Psychiatrist or Psychologist completes either the Best Practice Prescription Letter or a Psychological/Psychiatric Evaluation that specifically recommends Family Based Mental Health (FBMH) as medically necessary.
2. Referral source completes the Pre-Certification form.
3. Send both the completed Pre-Certification form and signed Prescription Letter/Psych Eval right away, as these are time sensitive.
4. Send the required referral documents to:

### ACLH

Fax: (814) 456-4873  
Secure Email: FBMH@achievementctr.org

### CCLH

Fax: (814) 664-4020  
Secure Email: FBMH@cscocorry.org

5. Once a completed, signed referral packet is received, the Director/Supervisor will attempt to contact the family.





# Family Preservation Services

<p><b>Program Offered for:</b></p>  <p>Families</p>	<p><b>Program Offered at:</b></p>  <p>Corry Counseling of LECOM Health</p>	<p><b>Contact Information:</b></p> <p>814-664-7761 ext. 120</p>
--	---	---

**Family Preservation is a specialized program funded by the Erie County Office of Children and Youth. It serves children and families referred by the Office of Children and Youth with the goal of preventing the unnecessary placement of children outside of the home and assisting children who are in foster care or other placements to return home while maintaining child safety as the highest priority.**

## Referral Process:

All clients of the Family Preservation Program must be referred by the Office of Children and Youth, either by an on-going or intake caseworker.

The caseworker determines if a family can benefit from program services to assist and support parents/caregivers in maintaining children at home or to assist with the return home of children who have been placed outside the home. Emphasis is placed on working with the parent to provide a safe and stable home environment.

The caseworker completes the referral form and faxes it to CCLH. CCLH will then proceed with the caseworker and family.



# Intensive Behavioral Health Services

<p><b>Program Offered for:</b></p>  <p>Youth</p>	<p><b>Program Offered at:</b></p> 	<p><b>Contact Information:</b></p> <p>Erie: 814-459-2755, option 1  Corry: 814-964-3005  Warren: (814) 726-4975  Crawford: (814) 724-1331</p>
---	---	---

**Intensive Behavioral Health Services (IBHS) are designed to provide supports and services for children, youth and their families who are experiencing mental, emotional, and behavioral health needs. Services include intensive interventions to address these needs in the home, school, and the community. The Achievement Center of LECOM Health is licensed to provide both Individual Services and Applied Behavioral Analysis Services within IBHS.**

## Referral Process:

1. A written order that complies with IBHS regulations is necessary for services to be initiated. However, a psychological or psychiatric evaluation can be used in place of a written order provided the evaluation includes all regulatory elements that must be in the written order.

a. Written orders must be completed by a psychiatrist, psychologist, PA, CRNP, LCSW, LPC or LMFT who is enrolled as an ordering, referring, and prescribing provider and is also PROMISe enrolled.

2. Fax the written order to 814-456-4873 or secure email the written order to IBHS@achievementctr.org or WarrenIBHS@achievementctr.org, depending on location.

*\*NOTE: If you're located in the Erie area, send any questions/referrals to IBHS@achievementctr.org. If you're in the Warren area, email WarrenIBHS@achievementctr.org*



# Medication Management

## Program Offered for:



ACLH - Youth  
CCLH & LIBH - Youth and Adult

## Program Offered at:



## Contact Information:

ACLH: 814-459-2755, option 1

CCLH: 814-664-7761

LIBH: (814) 454-3174

The goal of **Psychiatric Medication Management** is to administer and monitor medication for the purpose of alleviating or stabilizing symptoms for certain conditions. The process includes initial and ongoing medication review to address safety and adherence concerns, reduce adverse drug events, educate patients, and engage patients and their caregivers.

## Referral Process:

1. Call the agency of choice at the phone number listed above.
2. An Intake Specialist will gather needed information and provide the referral information to Medication Management department staff.
3. If the referral can be supported, an Intake Assessment will be scheduled.
4. A Psychiatric Evaluation is then conducted.



# Outpatient Therapy

<p><b>Program Offered for:</b></p>  <p>ACLH - Youth CCLH &amp; LIBH - Youth &amp; Adult</p>	<p><b>Program Offered at:</b></p>  <p><b>LECOM HEALTH</b> MILLCREEK COMMUNITY HOSPITAL</p>	<p><b>Contact Information:</b></p> <p><b>ACLH:</b> 814-459-2755, option 1 <b>CCLH:</b> 814-664-7761 <b>MCH:</b> 814-866-4400</p>
--	---	--

**Outpatient Therapy is offered at all levels at a variety of LECOM entities. Services are available to both children and adults experiencing concerns ranging from problems in daily living to serious emotional illness. Common areas of concern include depression, anxiety, panic, stress, adjustment difficulties, emotional regulation, anger management, trauma, grief, social isolation, and more.**

## Referral Process:

1. Call the agency of choice at the phone number listed above.
2. An Intake Specialist will gather needed information. At Corry Counseling of LECOM Health, staff will schedule an intake at the time of the initial call.
3. If the referral can be supported, an appointment will be provided for an Intake Assessment.
4. The therapist will provide treatment recommendations for consideration and a collaborative treatment plan and crisis plan will be developed.



# Adult Psychiatric Partial Hospitalization

<b>Program Offered for:</b>  Adult	<b>Program Offered at:</b> 	<b>Contact Information:</b>  Phone: (814) 868-8358
---	---	--

The Adult Psychiatric Partial Hospitalization Program at Millcreek Community Hospital is a community based mental health treatment program specifically designed to meet the needs of those individuals experiencing behavioral or emotional difficulties. The program is designed for individuals who do not require inpatient hospitalization, but are in need of more intensive treatment than standard outpatient therapy and psychiatric appointments. Participants engage in a therapeutic environment with professional staff.

## Referral Process:

In order to participate in the Partial Hospitalization Program, specific eligibility criteria must be present. If you or your loved one meet one or more of the following, you may be eligible:

- Diagnosis of severe mental illness
- Previous and/or current inpatient or outpatient psychiatric treatment
- Decrease in judgment and/or abilities due to mental health symptoms and treatment needs
- Ability to participate in group and individual therapy discussions
- Ability to work with professional staff to identify mental health treatment needs, objectives and goals
- Ability to exhibit control and behavior for appropriate participation in a group setting
- Lack of significant progress toward treatment goals at a lesser level of care

If you feel that the Partial Hospitalization Program is the right program for you or someone you support, please contact our referral line for additional information at (814) 868-8358.



## Short-Term Psychiatric Residential Treatment Facility (pRTF)

### Program Offered for:



Youth

### Program Offered at:

**L|E|C|O|M** HEALTH  
MILLCREEK COMMUNITY HOSPITAL

### Contact Information:

**MCH Phone:** 814-868-8286

**MCH Email:** [lecomprtf@mch1.org](mailto:lecomprtf@mch1.org)

The short-term psychiatric residential treatment facility (pRTF) offers children and adolescents a transition to family living with community-based services. The pRTF is a 10-bed unit at Millcreek Community Hospital for children ages 7-17. With a 1:4 staff to youth ratio and 24/7 supervision, the pRTF program provides a supportive environment that promotes success through the delivery of therapeutic intervention in the least restrictive environment. Individualized schedules include daily routine, positive behavior reinforcement, educational groups, and treatment planning.

## Referral Process:

**Providers:** To refer a patient, please send completed pRTF Referral Form and a copy of current psychiatric evaluation recommending pRTF by email to [lecomprtf@mch1.org](mailto:lecomprtf@mch1.org) or by fax to (814) 868-7793. If you have any questions please call, (814) 868-8286.



# Psychological Services

<b>Program Offered for:</b>  Youth	<b>Program Offered at:</b> 	<b>Contact Information:</b> Erie: 814-459-2755, option 1
---	---	---

Psychology staff at ACLH complete mental health assessments and psychological evaluations that help to clarify if an area of concern, such as an emotional or behavioral challenge, is reflective of a mental health diagnosis. If it is, they discuss a host of potential treatment recommendations the youth and family may qualify for. These evaluations and assessments often provide the necessary documentation needed in order for the youth and family to access a variety of mental health and behavioral health services.

## Referral Process:

Call the Achievement Center of LECOM Health at the phone number listed above to speak with an Intake Specialist, who will gather needed information to schedule an appointment.



# Residential Community Homes

<p><b>Program Offered for:</b></p>  <p>Adults</p>	<p><b>Program Offered at:</b></p> 	<p><b>Contact Information:</b></p> <p>CCLH: 814-664-7761 ext. 111</p>
--	---	---

**Residential Community Homes provides service and support to individuals in our homes and community to help them achieve a greater independence, learn new skills, maintain old skills and to have experiences for a fuller, richer life. From attending day services to shopping and dining out in the community our individuals enjoy many new experiences as well as familiar day to day routine activities.**

## Referral Process:

The agency's two group homes serve individuals age 16 years of age or older with significant developmental disabilities. When an opening occurs, the agency contacts the Erie County Department of Human Services and Erie County Care Management (ECCM) to inform them of the opening.

It is the role of ECCM to review a list of individuals whose eligibility has already been established and who are seeking a group home living situation. ECCM identifies an individual whose needs could be met by the group home. ECCM sends supporting documentation in regard to the identified individual to the agency group home director, who reviews it to determine if the individual is appropriate for the vacancy in terms of living space, anticipated compatibility with other resident needs and staffing.





# School-Based Services

<p><b>Program Offered for:</b></p>  <p>Youth</p>	<p><b>Program Offered at:</b></p>  	<p><b>Contact Information:</b></p> <p><b>ACLH:</b> 814-459-2755, option 1 <b>CCLH:</b> 814-664-7761</p>
---	---	---

**School-Based Services** are particularly helpful because of their convenience and accessibility. A child or adolescent's concerns are approached at school, in a familiar setting, which also prevents care delays such as a family's schedule or a lack of transportation. Referrals are made by teachers or guidance counselors or are requested by a student's parent(s) or guardian. Students may also do a self-referral.

## Referral Process:

1. School-based services are initiated by self-referral (youth and/or family member) and/or school personnel.
2. Self-referrals can be initiated by contacting intake specialists.
3. School personnel can initiate referrals by following their Student Assistance Program guidelines at their respective schools.
4. Students are then assessed by a Mental Health Professional. Following the results of the assessment, therapy interventions and/or care coordination is facilitated by a team member.



## Sub-Acute Care

<p><b>Program Offered for:</b></p>  <p>Youth</p>	<p><b>Program Offered at:</b></p> <p><b>LECOM</b> HEALTH MILLCREEK COMMUNITY HOSPITAL</p>	<p><b>Contact Information:</b></p> <p>MCH: (814) 881-5393</p>
---	---	---

Children ages 3-17 currently in the inpatient unit are able to be part of a sub-acute treatment track. Millcreek Community Hospital provides behavioral intervention, group therapy, individual therapy, and milieu therapy within the program. Children in this program will see a psychiatrist daily and work to strengthen therapeutic services and continuity of care with providers while avoiding regression and readmission to higher levels of care.

### Referral Process:

This level of care is only accessible to inpatient facilities.

For general inquiries related to behavioral health assessments or available services, please contact the LECOM Behavioral Health Clinical Liaison at (814) 881-5393. Calls will be answered and returned during normal business hours, Monday – Friday, 8:00 a.m. to 4:30 p.m., excluding major holidays.



# Transcranial Magnetic Stimulation

Program Offered for:



Adult

Program Offered at:

**LECOM** HEALTH  
MILLCREEK COMMUNITY HOSPITAL

Contact Information:

MCH: (814) 454-3174

**Transcranial Magnetic Stimulation (TMS)** is a noninvasive procedure that uses magnetic fields to stimulate nerve cells in the brain to improve symptoms of depression. TMS is typically used when other depression treatments – i.e. medication and therapy – have not been effective. A TMS session involves an electromagnetic coil placed against the person’s scalp near their forehead. The electromagnet painlessly sends out a magnetic pulse to stimulate nerve cells.

## Referral Process:

Providers or patients should call the LECOM Institute of Behavioral Health at (814) 454-3174 to schedule a consultation for the person with depression.

**NOTE:** Transcranial Magnetic Stimulation is a series of treatments over time. They typically occur daily for four-to-six weeks.